

Agilent GPC/SEC Software Sample GPC Analysis Report



Agilent Technologies

va smanh a

Workspace Details

Workspace name Poly lactide
Location C:\ProgramData\Agilent Technologies\GPC\Workspaces\Poly lactide\
Comments
Created by Administrator at 13:44:31 on 15 June 2015

Sample Properties

Sample name va smanh a
File name ICF_08_03_2018-0007.sample
Collected by GPC at 16:43:24 on 08 March 2018
Instrument name Instrument 1

Column Calibration Details

Name GPC_Calib
Created by Administrator at 15:53:55 on 18 June 2015
Last modified by GPC at 09:48:47 on 24 August 2016
Comments GPC Column Calibration created Thursday, June 18, 2015 by Administrator
GPC Column Calibration amended Thursday, June 18, 2015 by Administrator
GPC Column Calibration amended Thursday, June 18, 2015 by Administrator

Calibration Type	Narrow Standard	Curve Fit Used	3
Calibration Curve	$y = -0.0005918x^3 + 0.0308x^2 - 0.8981x + 12.44$		
High Limit MW RT (mins)	10.68333	Low Limit MW RT (mins)	19.65000
High Limit MW (g/mol)	465600	Low Limit MW (g/mol)	162
Flow Rate Marker Name		Flow Marker RT (mins)	0.00000
K (Input) ((10e-5) dL/g)	14.100		
Alpha (Input)	0.700		
Residual Sum Of Squares	0.0060349	Corrected Sum Of Squares	13.8054
Coeff. Of Determination	0.999563	Standard Y Error Estimate	0.0274657
Linear Correlation Coeff	-0.999414		

Column Calibration Data Points

Point	Peak Max RT (mins)	MW	Log MW	Point in Use?	Percent Error
1	10.68333	465600	5.67	Yes	7.18
2	11.33333	217900	5.34	Yes	-3.41
3	11.93333	113300	5.05	Yes	-11.05
4	12.98333	47190	4.67	Yes	0.18
5	13.51667	29150	4.46	Yes	0.34
6	14.46667	13270	4.12	Yes	5.45
7	15.23333	6940	3.84	Yes	6.73
8	16.20000	2780	3.44	Yes	-2.51
9	17.06667	1390	3.14	Yes	0.98
10	17.56667	860	2.93	Yes	-5.28
11	18.58333	370	2.57	Yes	-4.18
12	19.65000	162	2.21	Yes	3.96

Analyst:

Date:

Checked By:

Date:

Agilent GPC/SEC Software Sample GPC Analysis Report



Agilent Technologies

Processing Parameters

Method Last modified by Administrator at 13:44:30 on 15 June 2015
 Using Flow Rate Correction No
 Mark-Houwink K ((10e-5) dL/g) 14.100
 Mark-Houwink Alpha 0.700
 Concentration Detector Used in Analysis RI
 Injection volume (µL) 100.00
 Flow rate (mL/min) 1.00

MW Ranges Method

Calculate MW Ranges No

Percentage Fractions Method

Calculate Percentage Fractions No

Results

Analysed by GPC at 09:41:39 on 12 March 2018
 Comments

Molecular Weight Averages

Peak	Mp (g/mol)	Mn (g/mol)	Mw (g/mol)	Mz (g/mol)	Mz+1 (g/mol)	Mv (g/mol)	PD
Peak 1	4110	3199	4050	4940	5910	4805	1.266

Peak Information

	Start (mins)	End (mins)
Baseline region 1	0.15000	10.26667
Peak 1	14.25000	17.55000

Peak Trace Information

Peak	Trace	Peak Max RT (mins)	Peak Area (mV.s)	Peak Height (mV)
Peak 1	RI	15.76667	1347.769	17.712
Peak 1	VS DP	15.75000	904.769	10.186
Peak 1	VS IP	15.86667	14.517	0.526
Peak 1	LS 90°	15.76667	362.295	5.552
Peak 1	LS 15°	15.66667	154.096	2.674

Analyst:

Date:

Checked By:

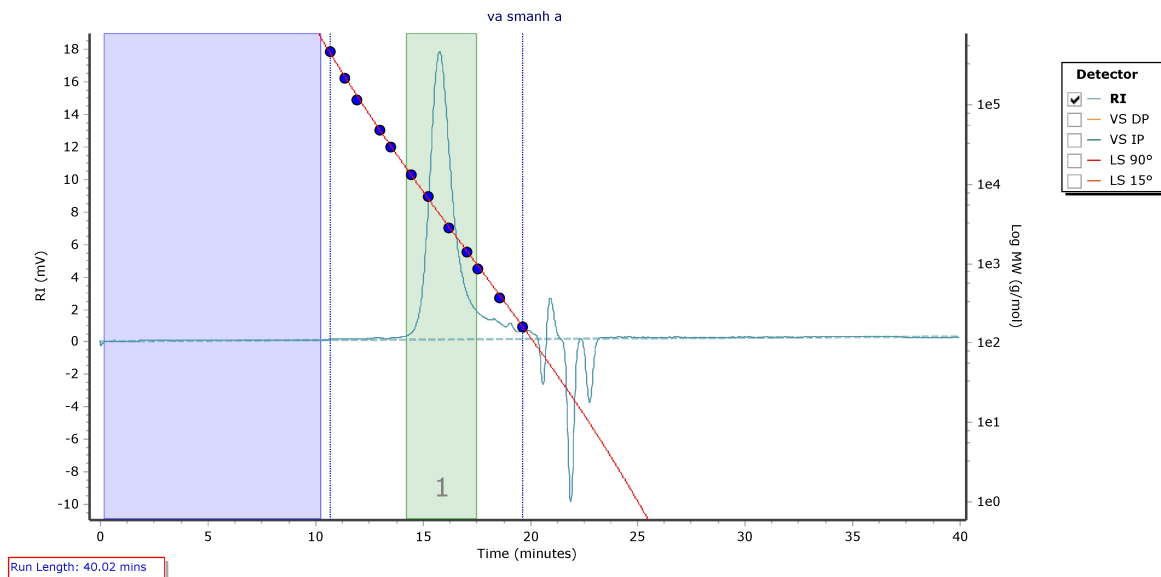
Date:

Agilent GPC/SEC Software Sample GPC Analysis Report



Agilent Technologies

Chromatogram Plot



Analyst:

Date:

Checked By:

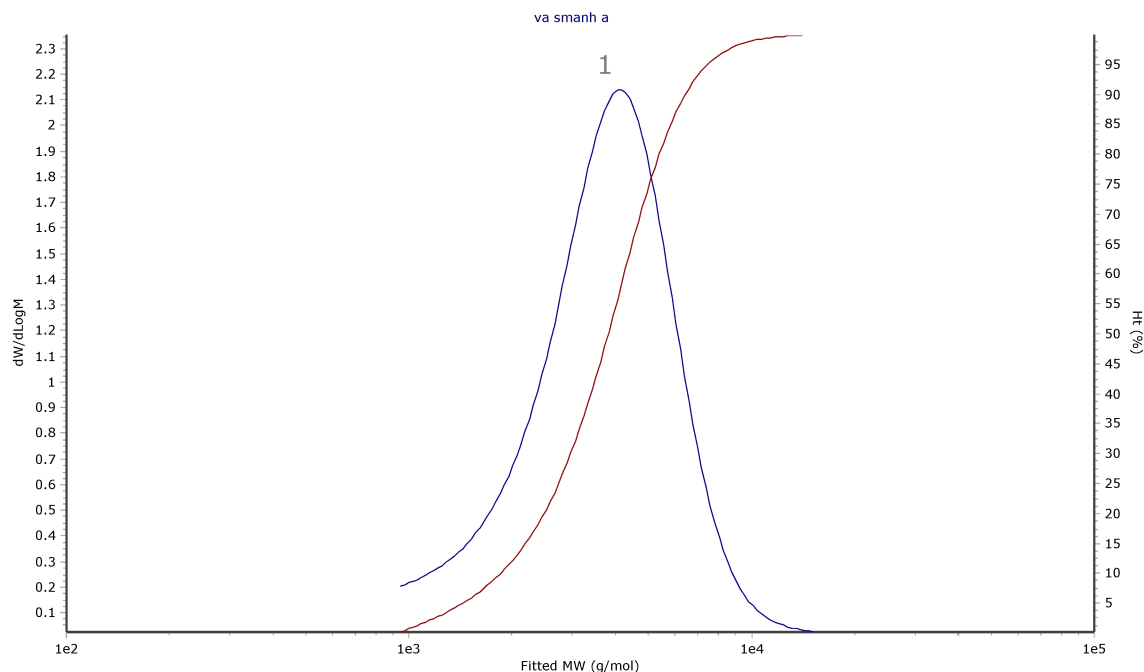
Date:

Agilent GPC/SEC Software Sample GPC Analysis Report



Agilent Technologies

Distribution Plot



Analyst:

Date:

Checked By:

Date: